



8 Hour Exploring Complex Ethical Dilemmas Boot Camp™

Language Neutral - English Only

8 HOUR EXPLORING COMPLEX ETHICAL DILEMMAS BOOT CAMP™

This 8 hour workshop will cover the basic precepts of several ethical codes for the medical and medical interpreting profession, and add medical ethics concepts that inform decision-making in a healthcare environment. Authentic and realistic case studies will be utilized and real time ethical decision making skills will be practiced. This is not a workshop for the beginner interpreter. It will challenge participants to the requirements of fast thinking, clear beliefs and expectations of self and others in how to behave in a highly charged ethical situation. At the end of the workshop, participants will be expected to:

Learning Objectives:

- Understand primary established ethical precepts that need to be followed by a medical interpreter.
- Identify what constitutes unethical behavior and its consequences
- Improve skills related to handling complex ethical dilemmas.

Required reading PRIOR to the Boot Camp:

IMIA Code of Ethics:

<http://www.imiaweb.org/code/default.asp>

IMIA Guide to Ethical Conduct:

http://www.imiaweb.org/uploads/pages/380_4.pdf

Recommended Reading:

NCIHC Code of Ethics:

<http://www.ncihc.org/assets/documents/NCIHC%20National%20Code%20of%20Ethics.pdf>

CHIA Code of Ethics (Note: pg. 24-32 of Standards):

<http://www.chiaonline.org/?page=CHIStandards>

RID Code of Ethics:

<http://www.rid.org/ethics/code/index.cfm/AID/66>

8 Hour Medical Terminology Boot Camp™

Language Neutral
A review course for all interpreters

MEDICAL TERMINOLOGY 101 FOR INTERPRETERS™

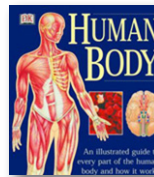
A review of basic medical terminology. Participants will acquire the essential knowledge of the basic components of medical terminology. Anatomy (structure), physiology (function), and pathology (diseases and disorders), are discussed. The session establishes a supporting knowledge that can encourage more independent and active learning. This is an interactive class. During the session's activities, the class will be divided into groups to work together and practice. Bring your dictionaries and a note pad. This session is language neutral and does NOT address the translation of terms, but the meaning of the terminology in English.

Learning Objectives:

- Identify basic anatomy and physiology related to the major body systems.
- Recognize prefixes, root words, and suffixes used to form medical terms.
- Explain terminology of common diseases and disorders associated to each body system.
- Recognize meaning of most common diagnostic procedures

Syllabus:

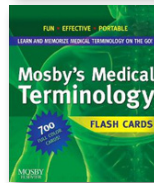
<http://www.imiaweb.org/uploads/pages/663..pdf>



HUMAN BODY

An Illustrated guide to every part of the human body and how it works.

Baggaley, Ann. Dorling Kindersley Publishing, Inc. New York, New York. First edition 2001. (This small book will be given to each participant of the MT Boot Camp.)



Mosby's Medical Terminology Flash Cards 2nd Edition

Mosby's Medical Terminology Flash Cards are the ultimate study tool for students who want extra help memorizing the prefixes, suffixes, and combining forms used to build medical terms. (Used by the instructor during the workshop.)

ETHICAL DILEMMAS
DATE / TIME / FEE

Saturday, May 4, 2013

7:30-8am registration / Class runs 8am-12pm & 1-5:30pm

\$159 member rate / \$239 non-member rate

Rates increase by \$50 after April 19th, 2013

(No on site registration available)

MEDICAL TERMINOLOGY
DATE / TIME / FEE

Sunday, May 5, 2013

7:30-8am registration / Class runs 8am-12pm & 1-5:30pm

\$159 member rate / \$239 non-member rate

Rates increase by \$50 after April 19th, 2013

(No on site registration available)



LOCATION:

Providence Office Park 2 Bldg

First Floor Main Conference Room • 4400 NE Halsey Ave • Portland, OR 97213

Web site: <http://oregon.providence.org/>

CEUs EACH WORKSHOP OFFERS:

IMIA: 0.8 IMIA CEU credits will be given to participants.

ATA: 8 ATA (American Translators Association) Continuing Education Points (CEPs) will be given to participants.

RID: To request RID CEUs, send email to MassRID Certification Maintenance Program CMP@MassRID.org, or contact your local CMP Coordinator.



SPECIAL OFFER!

SAVE FROM \$15 to \$25!

Get an IMIA Individual Membership (new or renewal) \$45/1yr, \$80/2yr, \$115/3yr when you pay for the membership while registering for this event! See option on the registration form - link below.