



## 8 Hour Medical Terminology Boot Camp™

Language Neutral  
A review course for all interpreters

### MEDICAL TERMINOLOGY 101 FOR INTERPRETERS™

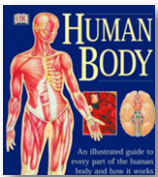
A review of basic medical terminology. Participants will acquire the essential knowledge of the basic components of medical terminology. Anatomy (structure), physiology (function), and pathology (diseases and disorders), are discussed. The session establishes a supporting knowledge that can encourage more independent and active learning. This is an interactive class. During the session's activities, the class will be divided into groups to work together and practice. Bring your dictionaries and a note pad. This session is language neutral and does NOT address the translation of terms, but the meaning of the terminology in English.

#### Learning Objectives:

- Identify basic anatomy and physiology related to the major body systems.
- Recognize prefixes, root words, and suffixes used to form medical terms.
- Explain terminology of common diseases and disorders associated to each body system.
- Recognize meaning of most common diagnostic procedures

#### Syllabus:

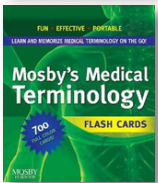
<http://www.imiaweb.org/uploads/pages/663..pdf>



#### HUMAN BODY

An Illustrated guide to every part of the human body and how it works.

Baggaley, Ann. Dorling Kindersley Publishing, Inc. New York, New York. First edition 2001. (This small book will be given to each participant of the MT Boot Camp.)



#### Mosby's Medical Terminology Flash Cards 2nd Edition

Mosby's Medical Terminology Flash Cards are the ultimate study tool for students who want extra help memorizing the prefixes, suffixes, and combining forms used to build medical terms. (Used by the instructor during the workshop.)

## 8 Hour Difficult Situations Boot Camp™

English < > Spanish

Workshop is mostly in English but linguistic examples are in Spanish. Advanced knowledge and experience required. Participants will be asked to role-play various scenarios throughout the session. Please come prepared to actively participate.

### COURSE 1 OF THE IMIA BOOT CAMP ADVANCED SERIES

8-hour workshops that have been designed to meet the needs of advanced practicing medical interpreters in various and different advanced areas of healthcare interpreting. The first course to be offered is:

#### INTERPRETING IN DIFFICULT SITUATIONS: FROM DEATH TO PROFANITY™

Interpreting death, violence, trauma, psychiatric situations, embarrassing language and profanity requires an enormous amount of energy, poise and skills from even the most experienced medical interpreter. Participants will learn about the main conditions, characteristics and peculiarities of difficult situations to help formulate different strategies to maintain accuracy, to ensure safety and to cope with these specific situations. Through case based scenarios and real life examples, participants will address the cultural, interpersonal, linguistic and stressful issues that typically arise. Group exercises allow for the exploration of cultural and linguistic concepts embedded in the case based renditions and interventions.

#### Learning Objectives:

- Analyze the key characteristics and special conditions of difficult situations.
- Acquire specific techniques to address the cultural and linguistic issues embedded in difficult situations.
- Ensure that accuracy of interpretation is maintained regardless of the difficulty of the situation.
- Learn to normalize idiomatic expressions that are linguistically and culturally difficult.

#### Syllabus:

[http://www.imiaweb.org/uploads/pages/663\\_2..pdf](http://www.imiaweb.org/uploads/pages/663_2..pdf)

**MEDICAL  
TERMINOLOGY  
DATE / TIME / FEE**

Saturday, April 6, 2013  
8am-9am registration / Class runs 9am-12pm & 1pm-5pm  
\$159 member rate / \$239 non-member rate  
(No on site registration available)

**DIFFICULT  
SITUATIONS  
BOOT CAMP  
DATE / TIME / FEE**

Sunday, April 7, 2013  
8am-9am registration / Class runs 9am-12pm & 1pm-5pm  
\$159 member rate / \$239 non-member rate  
(No on site registration available)



#### LOCATION:

**Wentworth-Douglass Hospital**  
789 Central Ave, Dover, N.H. 03820  
Phone: (603) 742-5252  
Toll free: (877)-201-7100  
Web Site:  
<http://www.wdhospital.com>



**IMIA:** 0.8 IMIA CEU credits will be given to participants.

**ATA:** 8 ATA (American Translators Association) Continuing Education Points (CEPs) will be given to participants.

**RID:** To request RID CEUs, please send an email to the MassRID Certification Maintenance Program at [CMP@MassRID.org](mailto:CMP@MassRID.org), or contact your local CMP Coordinator.

**SPECIAL OFFER!**

**SAVE FROM \$15 to \$25!** Get an IMIA Individual Membership (new or renewal) \$45/1yr, \$80/2yr, \$115/3yr when you pay for the membership while registering for this event! See option on the registration form - link below.